

# Community-based Conservation: Making a Community's Vision of a Refuge a Reality (Part 2)

Cameron Weber

*she/her*

Habitat Conservation Director

18 April 2024





Atrisco Heritage Academy High School



Albuquerque  
**WILDLIFE**  
Federation

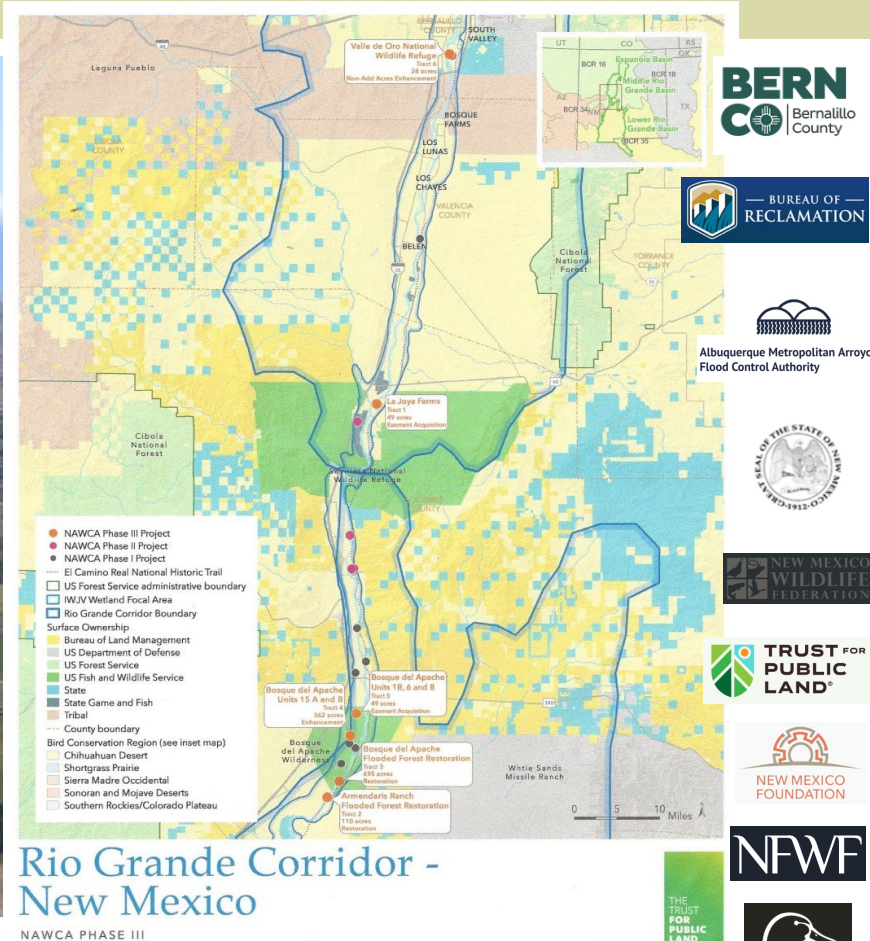
conservationists since 1914

# RIO GRANDE RETURN



Rio Grande Return works to address the impacts of climate change and the healing of degraded ecosystems by better understanding and utilizing natural regenerative processes.





# RIO GRANDE RETURN



RGR's **Habitat Conservation Program** exists in response to the growing need to regenerate agricultural lands into native habitats.

# Planting for Structure and Diversity



- 1,800 Cottonwood dormant poles
- 83,000 Salix spp. dormant whips and poles
- 1,400 Native habitat shrubs
- 33,000 Distichlis plugs





nex+Gen Academy High School  
*The next generation in learning*



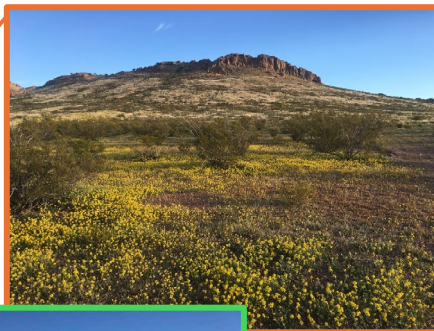
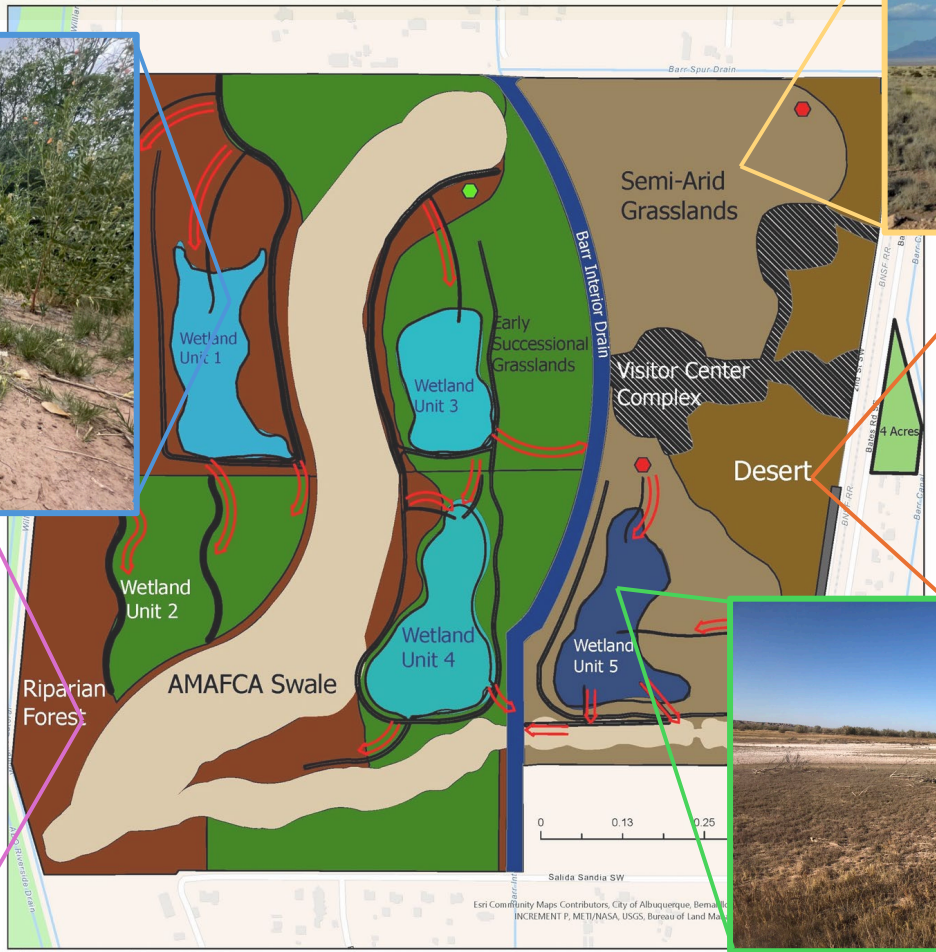




# RIO GRANDE RETURN



## U. S. Fish and Wildlife Service Future Management Units Valle de Oro National Wildlife Refuge



Esri Contributor Maps Contributors, City of Albuquerque, Bernice  
INCREMENT P, METI/NASA, USGS, Bureau of Land Man





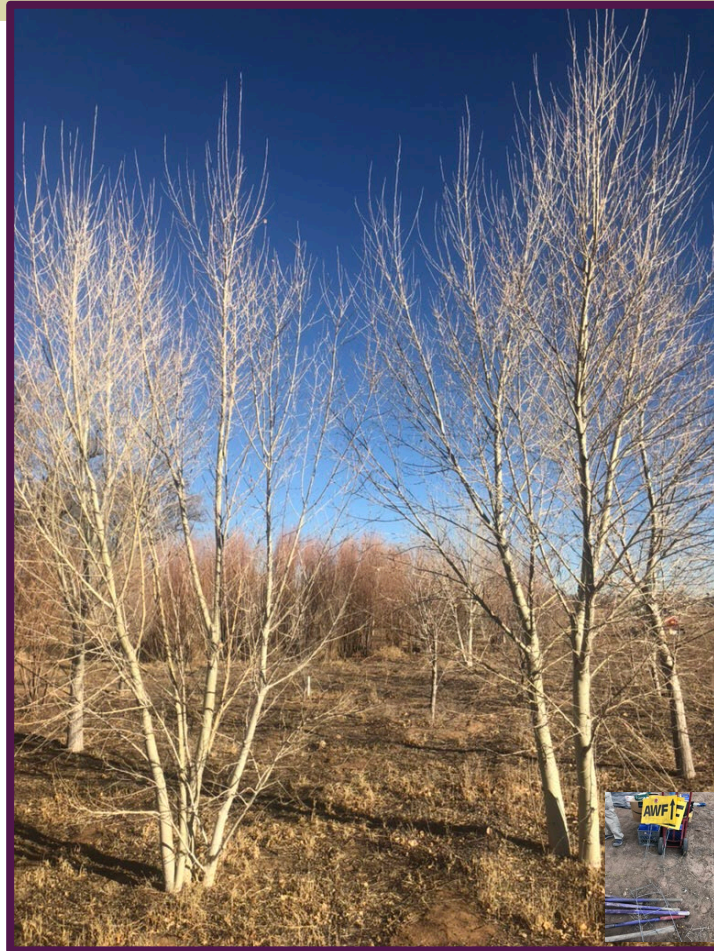
# Inland Saltgrass (*Distichlis spicata*)

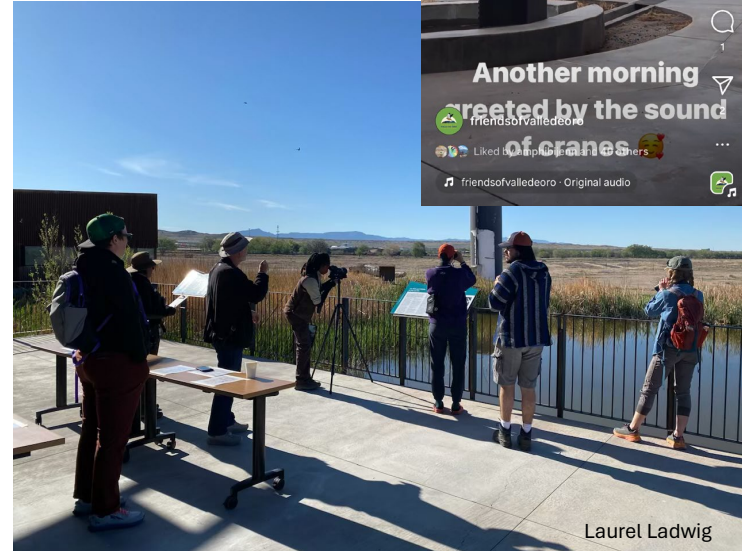
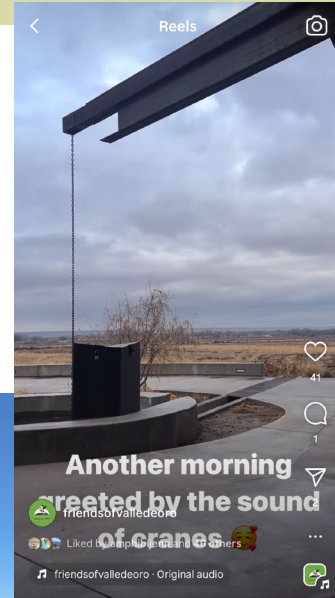


# Riparian Forest (Bosque)



# Rio Grande Cottonwood (*Populus deltoides* subsp. *wislizeni*)







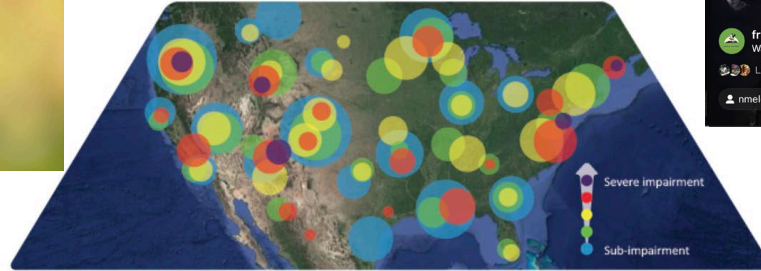
## The Dragonfly Mercury Project

A citizen science framework for monitoring mercury pollution in U.S. national parks using dragonfly larvae as biosentinels.

Published June 2020



Managing and Protecting Ecosystems



Linking Mercury Levels in Dragonfly Larvae to Health Risk for Wildlife and Humans



Engaging the Public in Actionable Science through a Combination of Fieldwork and Sophisticated Laboratory Analyses



# Transformative adaptation





# Questions?

